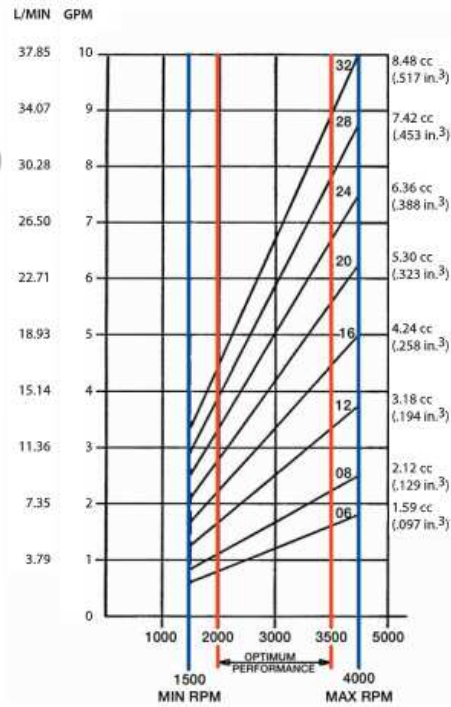
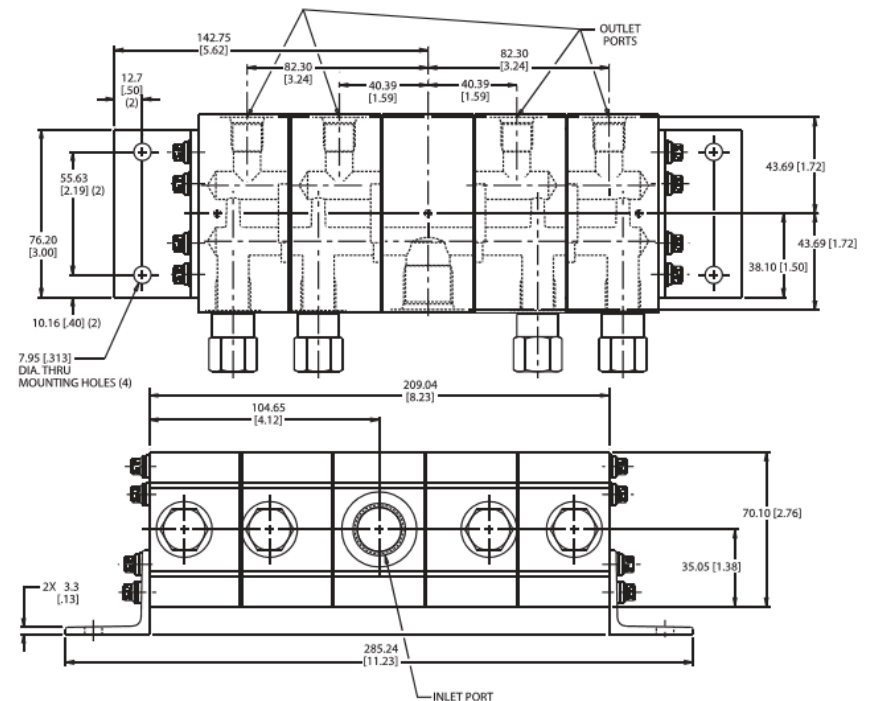
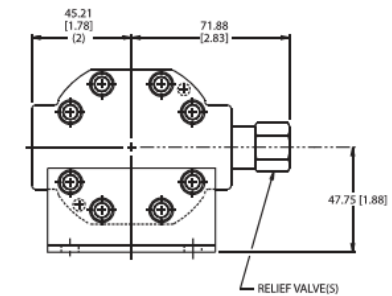
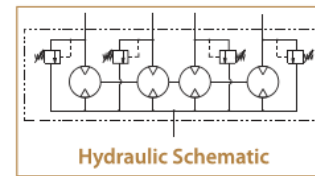




## Schön stark



(inches are in brackets)



BT-Hydraulik AG  
 3000 Bern 5  
 Fischermättelstrasse 6  
 Telefon 031 379 81 41  
 Telefax 031 382 39 80

Niederlassung:  
 8045 Zürich  
 Räfelstrasse 25  
 Telefon 044 463 22 52  
 Telefax 044 463 26 56

[info@bt-hydraulik.ch](mailto:info@bt-hydraulik.ch)  
[www.bt-hydraulik.ch](http://www.bt-hydraulik.ch)

Sections	Ports (BSPP)		Relief Valve	Displacement cc Per Section	Model Code X-Ref	Stock P/N
	Inlet	Outlet				
2	1/2-14	1/2-14	Included	2.11	FG1220023	1303144
2	1/2-14	1/2-14	Included	3.18	FG1330023	1303165
2	1/2-14	1/2-14	Included	4.24	FG1440023	1303149
4	1/2-14	1/2-14	Included	2.11	FG3222223	1303157
4	1/2-14	1/2-14	Included	4.24	FG3444423	1303147