



Schön stark

Axialkolbenpumpe PPV

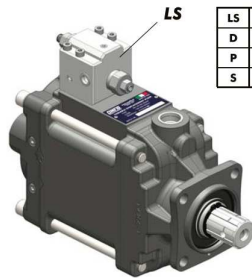


CODICI ORDINAZIONE / ORDER CODES							
PPV 60	PPV 60 ADJUSTABLE	PPV 75	PPV 90	PPV 110			
108-060-00625 sinistra/left	108-060-20621 sinistra/left	108-060-00778 sinistra/left	108-060-00929 sinistra/left	108-060-01124 sinistra/left			
108-060-00634 destra/right	108-060-20630 destra/right	108-060-00787 destra/right	108-060-00938 destra/right	108-060-01133 destra/right			
DATI TECNICI / TECHNICAL FEATURES		PPV60 ADJUSTABLE	PPV75	PPV90	PPV110		
Portata / Flow		60 l/min.	75 l/min.	90 l/min.	110 l/min.		
Angolo di regolazione massima / Max. swash plate angle		21,5°					
Pressione di lavoro / Working pressure		375 bar	400 bar	375 bar	400 bar	375 bar	400 bar
Pressione d'ingresso assoluta necessaria nel circuito aperto Absolute inlet pressure required in open circuit		0,85 bar					
Pressione massima ammissibile sul corpo (statica/dinamica) Max. permissible housing pressure (static/dynamic)		3 bar					
Pressione d'ingresso massima ammissibile Max. permissible inlet pressure (static/dynamic)		2 bar					
Numero di giri max. con angolo di regolazione max. a una pressione d'ingresso assoluta di 1 bar. / Max. speed during suction operation and max. swash plate angle at 1 bar abs. Inlet pressure		2500 rpm	2400 rpm	2300 rpm	2200 rpm		
Numero giri max. in annullamento e pressione d'ingresso assoluta 1 bar. Max. speed with zero stroke and 1 bar abs. Inlet pressure		3000 rpm					
Numero di giri minimo in funzionamento continuo Min. speed in continuous operation		500 rpm					
Coppia motrice necessaria a 100 bar Required drive torque at 100 bar		100 Nm	125 Nm	150 Nm	185 Nm		
Potenza motrice a 250 bar e 2.000 rpm Drive power at 250 bar and 2000 rpm		53 kW	80 kW	100 kW	120 kW		
Peso / Weight		24 Kg	26 Kg	29 Kg	30 Kg		

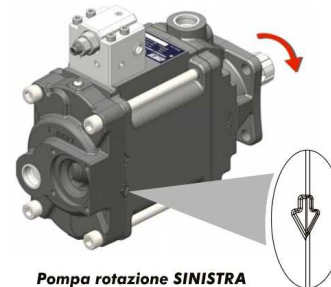
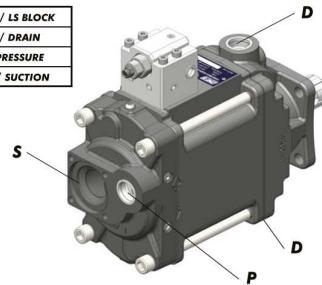
BT-Hydraulik AG
3000 Bern 5
Fischermättelstrasse 6
Telefon 031 379 81 41
Telefax 031 382 39 80

Niederlassung:
8045 Zürich
Räffelstrasse 25
Telefon 044 463 22 52
Telefax 044 463 26 56

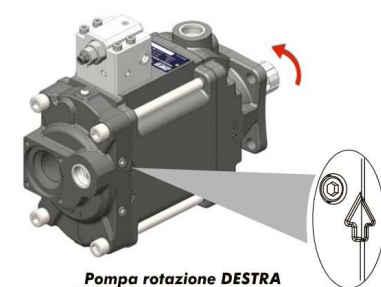
info@bt-hydraulik.ch
www.bt-hydraulik.ch



LS	BLOCCETTO LS/ LS BLOCK
D	DRENAGGIO / DRAIN
P	PRESSIONE / PRESSURE
S	ASPIRAZIONE / SUCTION



Pompa rotazione SINISTRA
LEFT Hand rotating pump

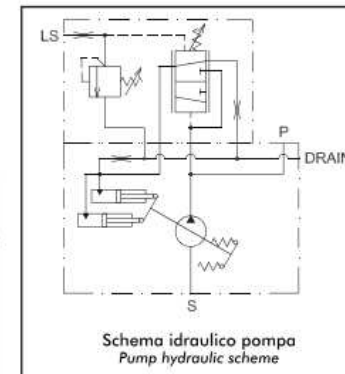
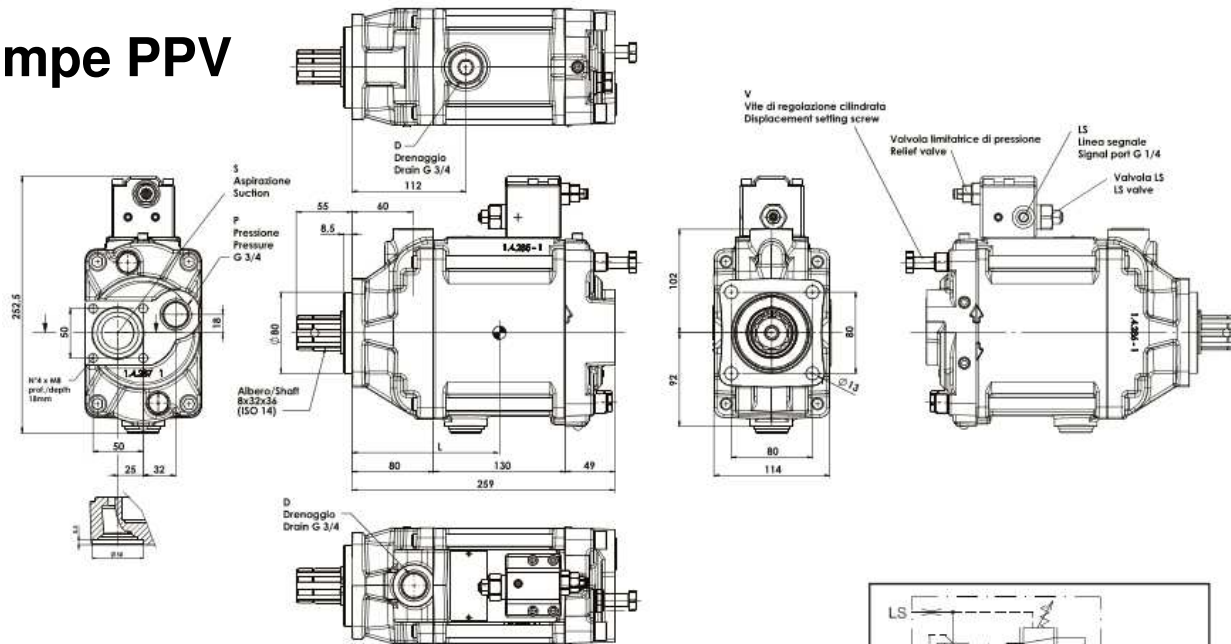


Pompa rotazione DESTRA
RIGHT Hand rotating pump



Schön leistungsfähig

Axialkolbenpumpe PPV



BT-Hydraulik AG
3000 Bern 5
Fischermättelstrasse 6
Telefon 031 379 81 41
Telefax 031 382 39 80

Niederlassung:
8045 Zürich
Räffelstrasse 25
Telefon 044 463 22 52
Telefax 044 463 26 56

info@bt-hydraulik.ch
www.bt-hydraulik.ch

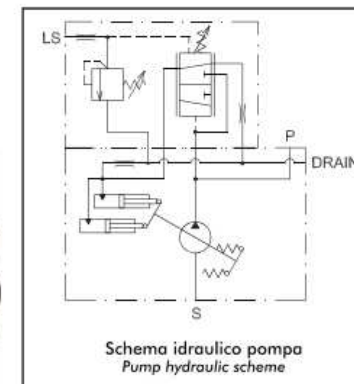
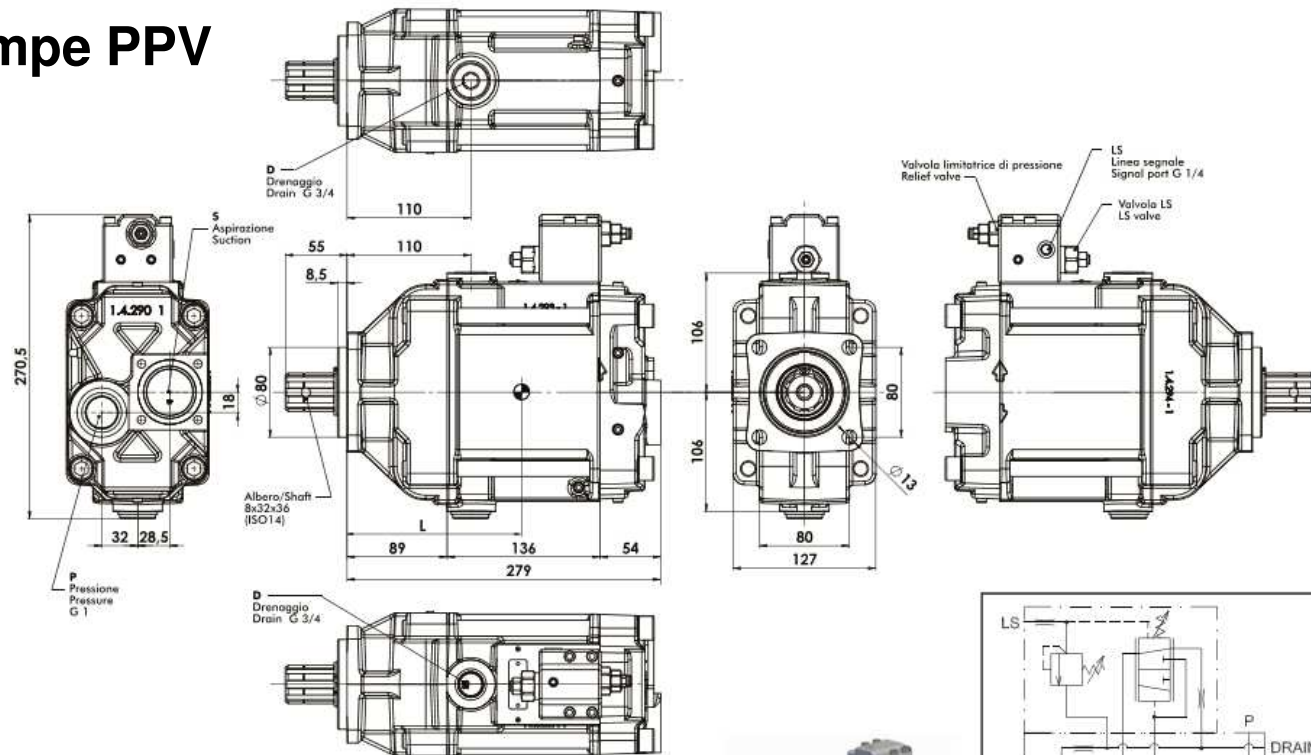
PPV 60 ADJUSTABLE		
LS	BLOCCHETTO LS/ LS SIGNAL PORT	G 1/4
D	DRENAGGIO / DRAIN	G 3/4
P	PRESSIONE / PRESSURE	G 3/4
S	ASPIRAZIONE / SUCTION Raccordo da ordinare separatamente Suction fitting to be ordered separately	Ø50mm
V	VITE REGOLAZIONE CILINDRATA DISPLACEMENT SETTING SCREW	
L	BARICENTRO / CENTER OF MASS	144mm





Schön ausgereift

Axialkolbenpumpe PPV



BT-Hydraulik AG
3000 Bern 5
Fischermättelstrasse 6
Telefon 031 379 81 41
Telefax 031 382 39 80

Niederlassung:
8045 Zürich
Räffelstrasse 25
Telefon 044 463 22 52
Telefax 044 463 26 56

info@bt-hydraulik.ch
www.bt-hydraulik.ch

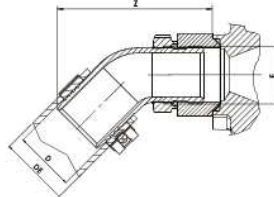
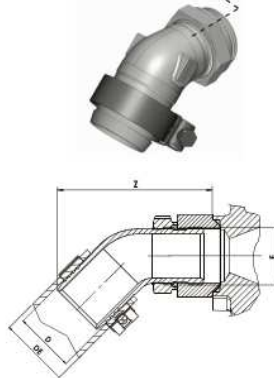
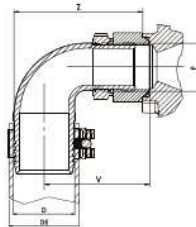
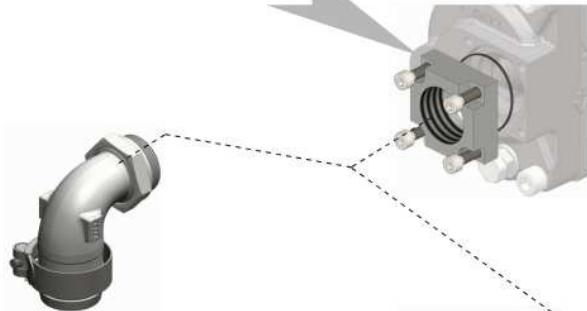
		PPV 75	PPV 90	PPV 110
LS	BLOCCHETTO LS/ LS SIGNAL PORT		G 1/4	
D	DRENAGGIO / DRAIN		G 3/4	
P	PRESSIONE / PRESSURE		G 1	
S	ASPIRAZIONE / SUCTION Raccordo da ordinare separatamente Suction fitting to be ordered separately		Ø50 mm	
L	BARICENTRO / CENTER OF MASS		154 mm	



Schön vielseitig

Axialkolbenpumpe PPV

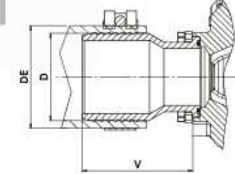
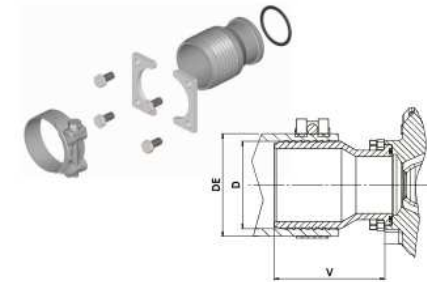
155-113-00408
Kit flangia foro filettato G1-1/2, per montaggio raccordi GOLD.
Flange kit G1-1/2 threaded hole, for mounting GOLD fittings.



Codice Code	F	D	DE	V	Z	Peso Weigh
	(ISO 228) mm	mm	mm	mm	mm	Kg
155-100-00592	50	60-63	85	114	0,99	
155-100-00609	G1-1/2	64-67	85	114	1	
155-100-00654	60	68-73	88	123	1,06	

Codice Code	F	D	DE	Z	Peso Weigh
	(ISO 228) mm	mm	mm	mm	Kg
155-090-00540	50	60-63	133	0,79	
155-090-00559	G1-1/2	64-67	133	0,82	
155-090-00611	60	68-73	153	1	

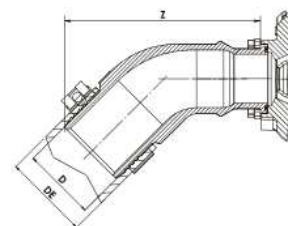
RACCORDI ASPIRAZIONE SUCTION FITTINGS



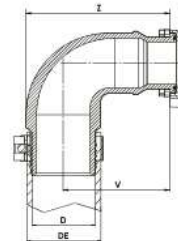
Codice Code	D	DE	V	Peso Weigh
	mm	mm	mm	Kg
155-112-00507	50	60-63	59	0,59
155-112-00516	50	64-67	59	0,6
155-112-00605	60	68-73	79	0,77
155-112-00632	63	74-79	79	0,8
155-112-00767	76	86-91	94	1



Codice Code	D	DE	Z	Peso Weigh
	mm	mm	mm	Kg
155-112-45639	63	74-79	163	1,75
155-112-45744	76	86-91	167	2,1



Codice Code	D	DE	V	Z	Peso Weigh
	mm	mm	mm	mm	Kg
155-112-90634	63	74-79	103	139	1,9
155-112-90769	76	86-91	103	140	2,3



BT-Hydraulik AG
3000 Bern 5
Fischerhüttelstrasse 6
Telefon 031 379 81 41
Telefax 031 382 39 80

Niederlassung:
8045 Zürich
Räffelstrasse 25
Telefon 044 463 22 52
Telefax 044 463 26 56

info@bt-hydraulik.ch
www.bt-hydraulik.ch